



DENTON COUNTY  
TRANSPORTATION  
AUTHORITY

# Your safety is music to our ears.

Riding DCTA is a fun experience, and we want to ensure that you navigate our system safely to get to your desired destination. Safety is a top priority for us, that's why it's music to our ears!

It's important for us at DCTA to inform passengers about key safety policies and tips so you can avoid hazards and prevent incidents. Check out some fun tunes and tips to put into practice every time you #RideDCTA!



**R-E-S-P-E-C-T!  
FIND OUT  
WHAT IT  
MEANS TO ME.**

*Original song written by Otis Redding*

A little respect can go a long way. The following tips address appropriate behavior to follow when interacting with our drivers and passengers, following signage and interfacing with our vehicles:

**Don't Distract the Driver**

Refrain from behavior that can distract the driver.

**Obey All Signage**

Make sure to follow all vehicle, platform and crossing signage.

**Stay Out of the Aisles**

Don't obstruct aisles. Keep your hands and feet inside the seating area.

**Keep Your Distance**

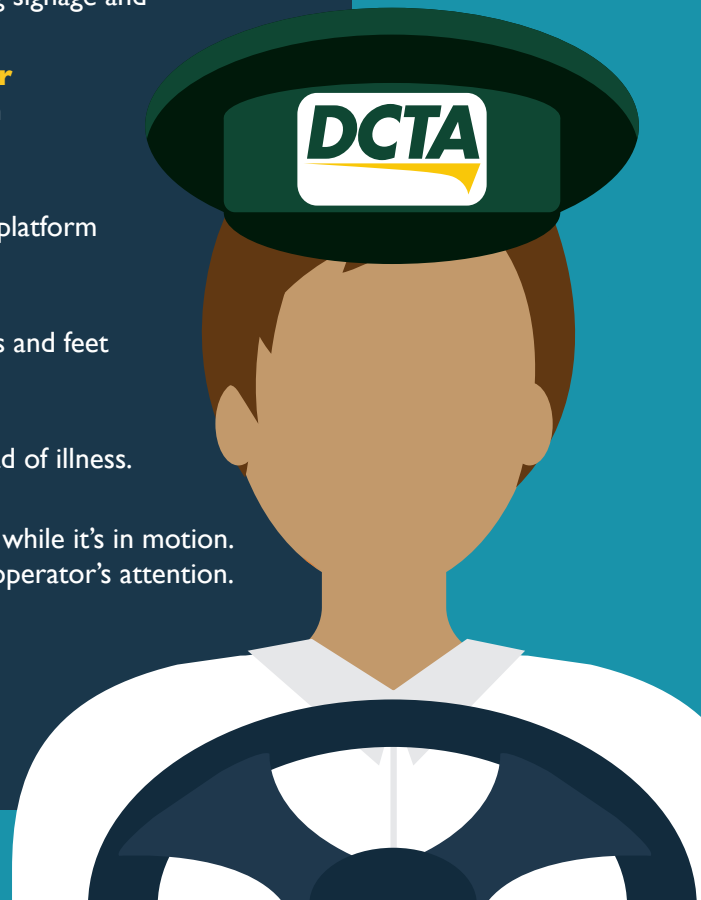
Practice social distancing to help prevent the spread of illness.

**Don't Touch a Moving Vehicle**

Refrain from touching the exterior of our vehicles while it's in motion. Don't knock on doors or windows to attract the operator's attention.

**Practice Rider Etiquette**

Don't be "that" rider who annoys others. Follow our rider code of conduct to ensure the safety, security, comfort and convenience of all those who use DCTA vehicles and facilities.





Don't be afraid to call. The following tips address things you can do to ensure your safety while riding DCTA:

**If You See Something, Say Something**

If you see something suspicious or other passengers behaving inappropriately, say something. You can tell a DCTA employee or call 9-1-1.

**Use Our Emergency Call Boxes**

In case of an emergency, use the emergency call box on our A-train platforms.



We really like you, but for your safety we need you to stand a safe distance from our train tracks. The following tips address appropriate behavior to follow when you're on our A-train platforms, crossing or near our tracks:

**Be Safe on Our Platforms**

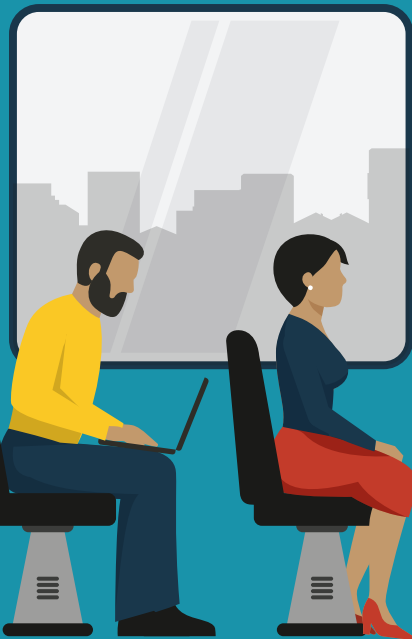
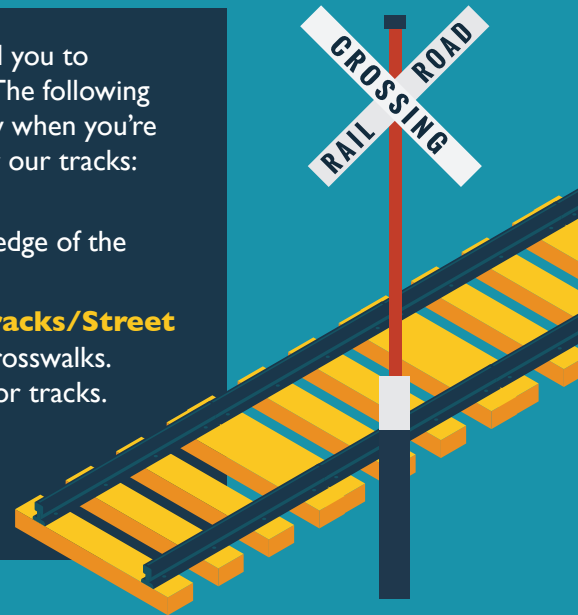
Stand behind the rumble strip along the edge of the A-train platform while waiting.

**Be Careful When Crossing the Tracks/Street**

Only cross railroad tracks at designated crosswalks. Look both ways before crossing the street or tracks. Listen for signals when crossing the tracks.

**Don't Play Near the Tracks**

Never walk, ride or play on or near railroad tracks.



Staying put can be very wise in certain situations. The following tips address appropriate behavior to follow when riding the A-train or bus, and when you're near our vehicles:

**Remember to Stay Seated**

Always wait for the vehicle to come to a complete stop before boarding and exiting. Remember to stay seated and out of the aisles while the vehicle is in motion. If you need to stand, make sure you have firm footing and are holding the railing securely.

**Signal the Driver**

Always signal the driver by waving to them before stepping in front of the bus.

**Don't Run After our Vehicles**

Don't run after a bus or A-train. If you miss your ride, use our Transit Tracker system to find the next closest vehicle.

