

January 2013 Service Changes

Tuesday, September 4, 2012

Wednesday, September 5, 2012

Thursday, September 6, 2012

The logo for DCTA (District of Columbia Transit Authority) is displayed in white, bold, sans-serif capital letters on a dark green rectangular background. A yellow graphic element, resembling a stylized arrow or a speech bubble tail, points upwards from the bottom right corner of the green bar.

Intent of Service Changes

- Customer Feedback
 - Better connectivity
 - Bus to Train
 - Bus to Bus
- This service change will address connectivity and schedules
- The goal is to minimize wait time thus encouraging transit uses.
- Gather information for future service changes

The logo for DCTA (Dulles County Transit Authority) is displayed in white, bold, sans-serif capital letters on a dark green rectangular background. A yellow graphic element, resembling a stylized arrow or a speech bubble tail, points upwards from the bottom right corner of the green box.

DCTA

Overview of Current Routes

- DCTA currently operates:
 - Denton
 - Route 1: serving southwest Denton (west of I-35)
 - Route 2: serving Denton Reg'l Medical Center/MedPark Rail Station/Golden Triangle Mall
 - Route 3: east McKinney Street corridor
 - Route 4: TWU/Emily Fowler Library/east University Dr
 - Route 5: TWU/North Library/North Central Denton
 - Route 6: West University Drive corridor to I-35E
 - Route 7: Oak Street, Presbyterian Hospital/I-35E area
 - Route 8: Oak Street, Eagle Drive/North Central Denton corridor
 - Route 9: Hickory/Oak Corridor

The logo for DCTA (Denton County Transit Authority) features the letters "DCTA" in a bold, white, sans-serif font. The text is set against a dark green rectangular background. Below the green bar, a yellow shape resembling a stylized speech bubble or a drop shadow extends to the right.

Overview of Current Routes

- Highland Village
 - RSVP Service
 - Public service for all residents in Highland Village
- Lewisville
 - Route 21: Vista Ridge Mall/Hebron Rail Station/Northwest Central Lewisville/Main Street (FM 1170)
 - Route 22: Vista Ridge Mall/Lewisville HS/Mill Street/Main Street (FM 1170)
 - Route 23: Vista Ridge Mall/west FM 3040/Old Town Rail Station

The logo for DCTA (Dallas County Transit Authority) features the letters "DCTA" in a bold, white, sans-serif font. The letters are set against a dark green rectangular background. Below the green bar, a yellow shape resembling a stylized speech bubble or a drop tail extends from the right side of the logo.

Public Involvement

- Past Surveys & Community Meetings
 - 2011 Community-Wide Survey
- Community Celebration-August 18
- Public Meetings
 - September 3, 4, 5, 18
 - Lewisville, Highland Village ,Denton, UNT & TWU
- Townhall Twitter Meeting
 - September 13, 8 pm

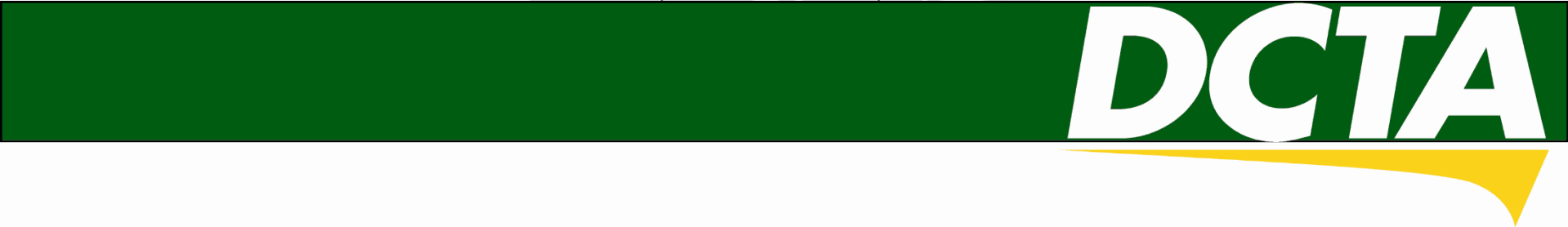
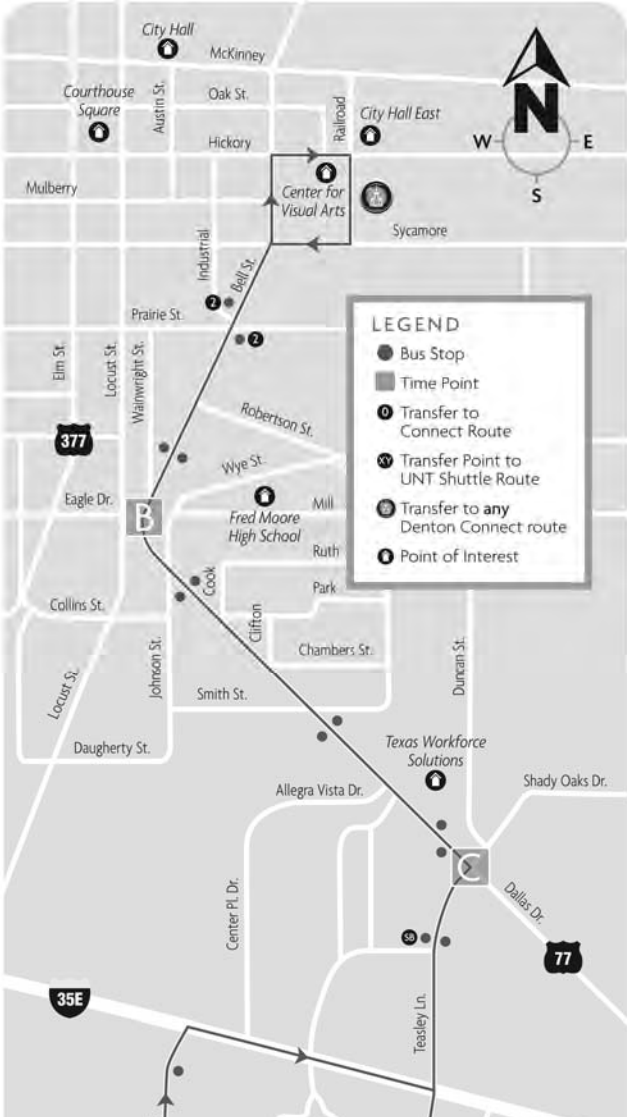
The logo for DCTA (Dallas County Transportation Authority) is displayed in white, bold, sans-serif capital letters on a dark green rectangular background. A yellow graphic element, resembling a stylized arrow or a speech bubble tail, points upwards from the bottom right corner of the green bar.

Proposed Denton Changes

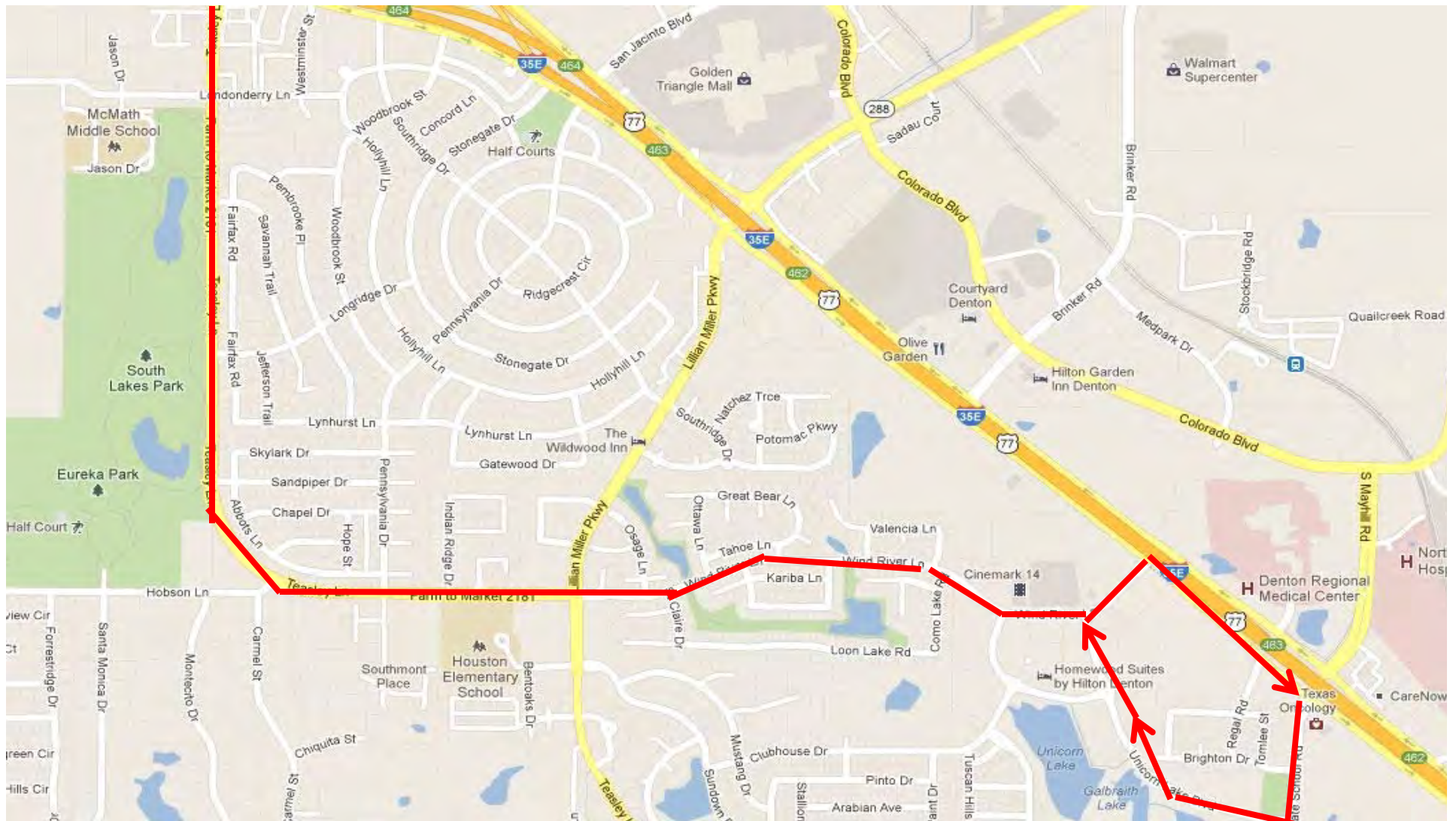
- Route 1
 - Expansion of route to Unicorn Lake area, Denton State School & Josten's
- Route 2
 - Better service through Southeast Denton
 - Closer stop to Sally Beauty
- Routes 3 and 4 become stand-alone routes
 - Better connectivity with other bus routes & A-train
 - Both routes go from a 73 minute headway to approximately 30 minute headway
- Routes 1 and 6 become 'interlined'. Last set but headways improve slightly
- Schedule changes to ensure better connections at DDTC and MedPark with the A-train

The logo for DCTA (Denton County Transit Authority) is displayed in white, bold, sans-serif capital letters on a dark green rectangular background. A yellow graphic element, resembling a stylized arrow or a speech bubble tail, points upwards from the bottom right corner of the green box.

Current Route 1

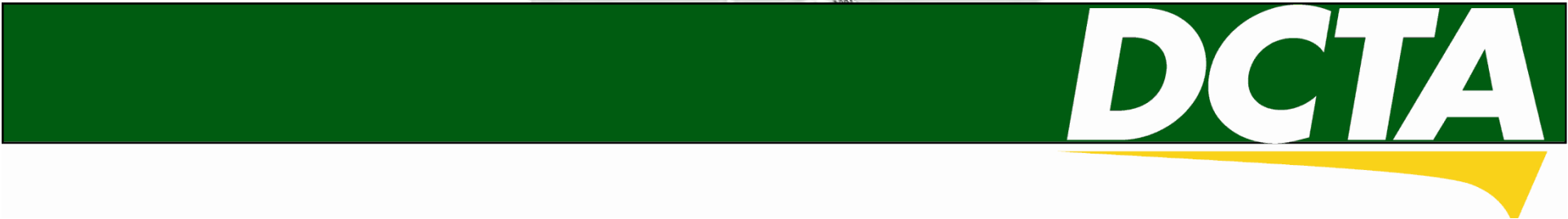


Proposed Extension of Current Route 1

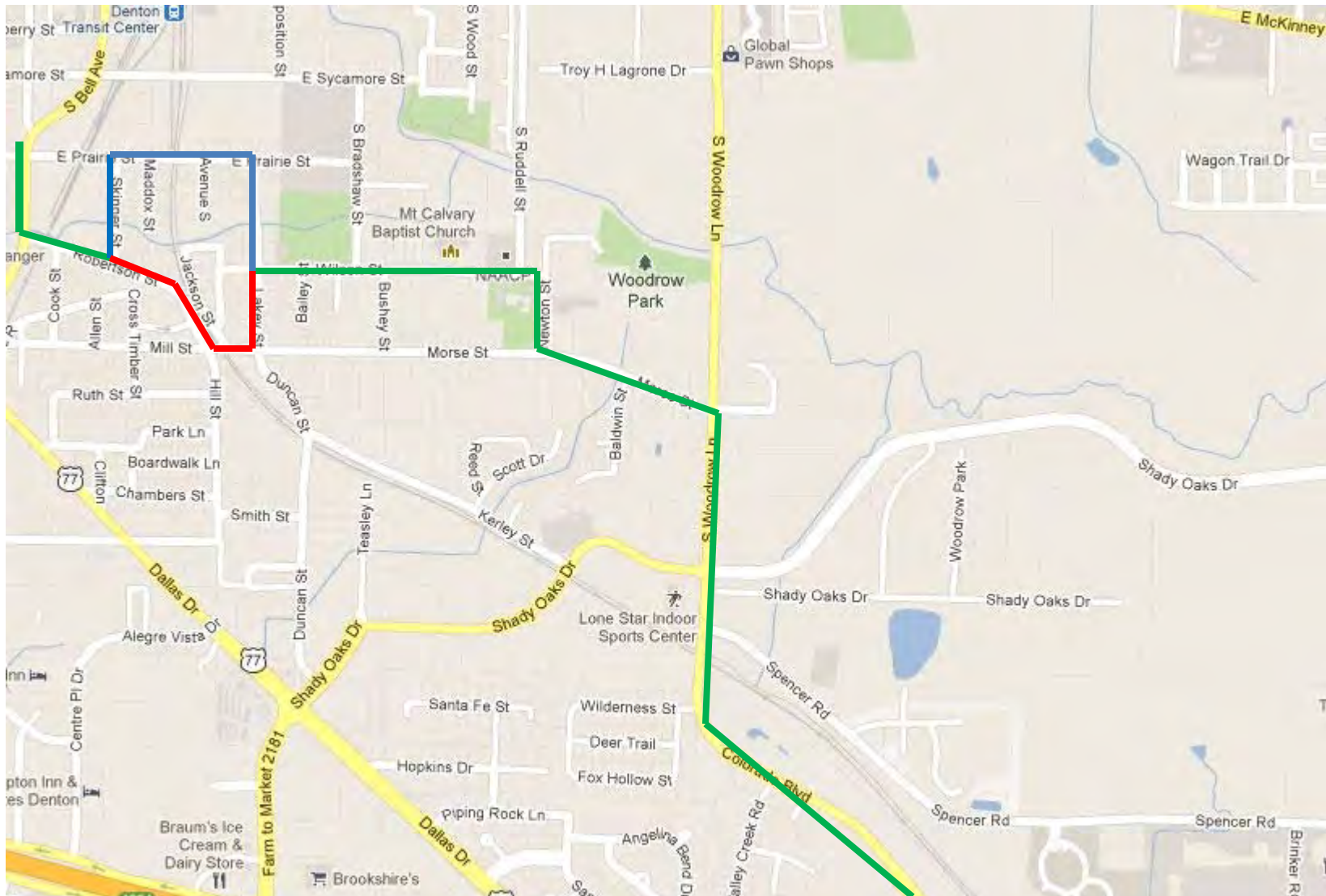


DCTA

Current Route 2



Route 2 Modification



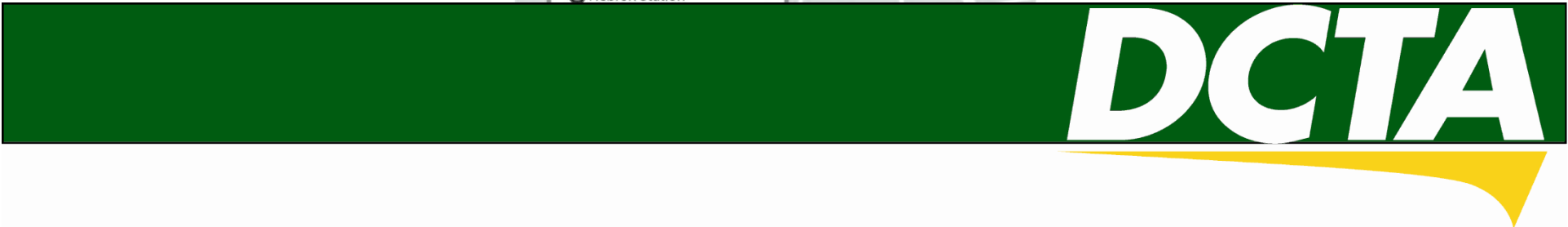
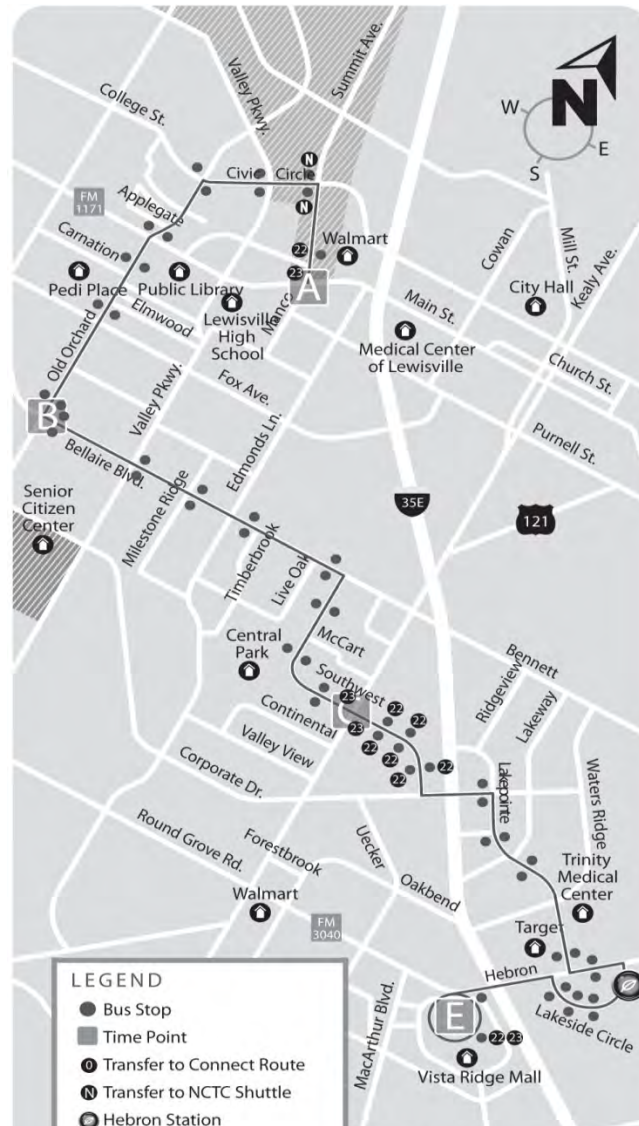
DCTA

Proposed Lewisville Changes

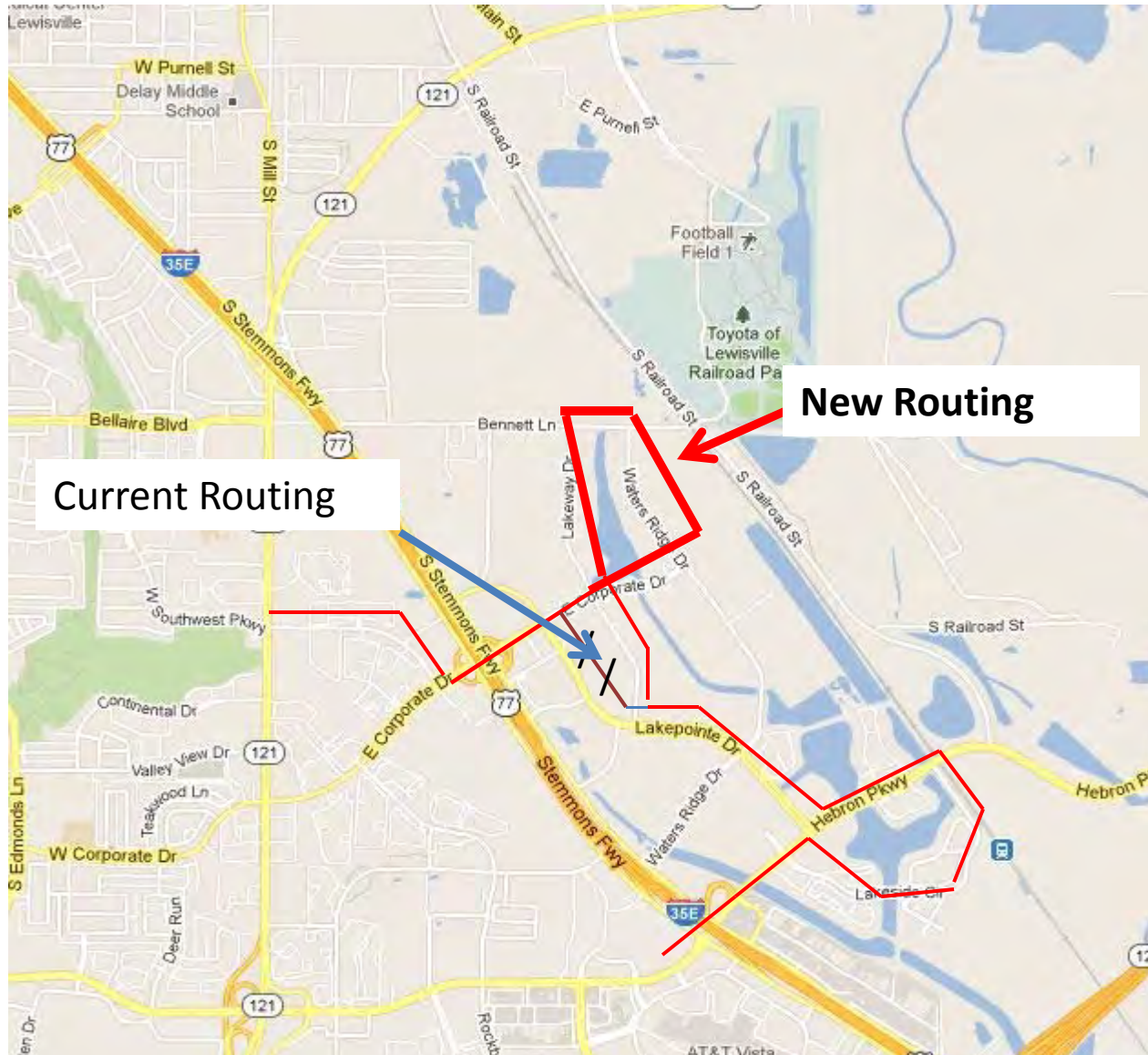
- Route 22
 - Additional bus during Peak Period
 - 30 Minute headway during Peak Period so that all routes have greater connectivity and ease of bus-to-bus transfer
- Schedule modifications to ensure better connectivity with A-train schedule
- Looking for feedback for new Lewisville Business Park Route
 - Serves Convergence, Business Park south of 121 Toll Road and businesses east of 35E off of Corporate Drive
 - Connection to Hebron Station

The logo for DCTA (Dallas County Transit Authority) is displayed in white, bold, sans-serif capital letters on a dark green rectangular background. A yellow graphic element, resembling a stylized arrow or a speech bubble tail, points upwards from the bottom right corner of the green bar.

Current Route 21



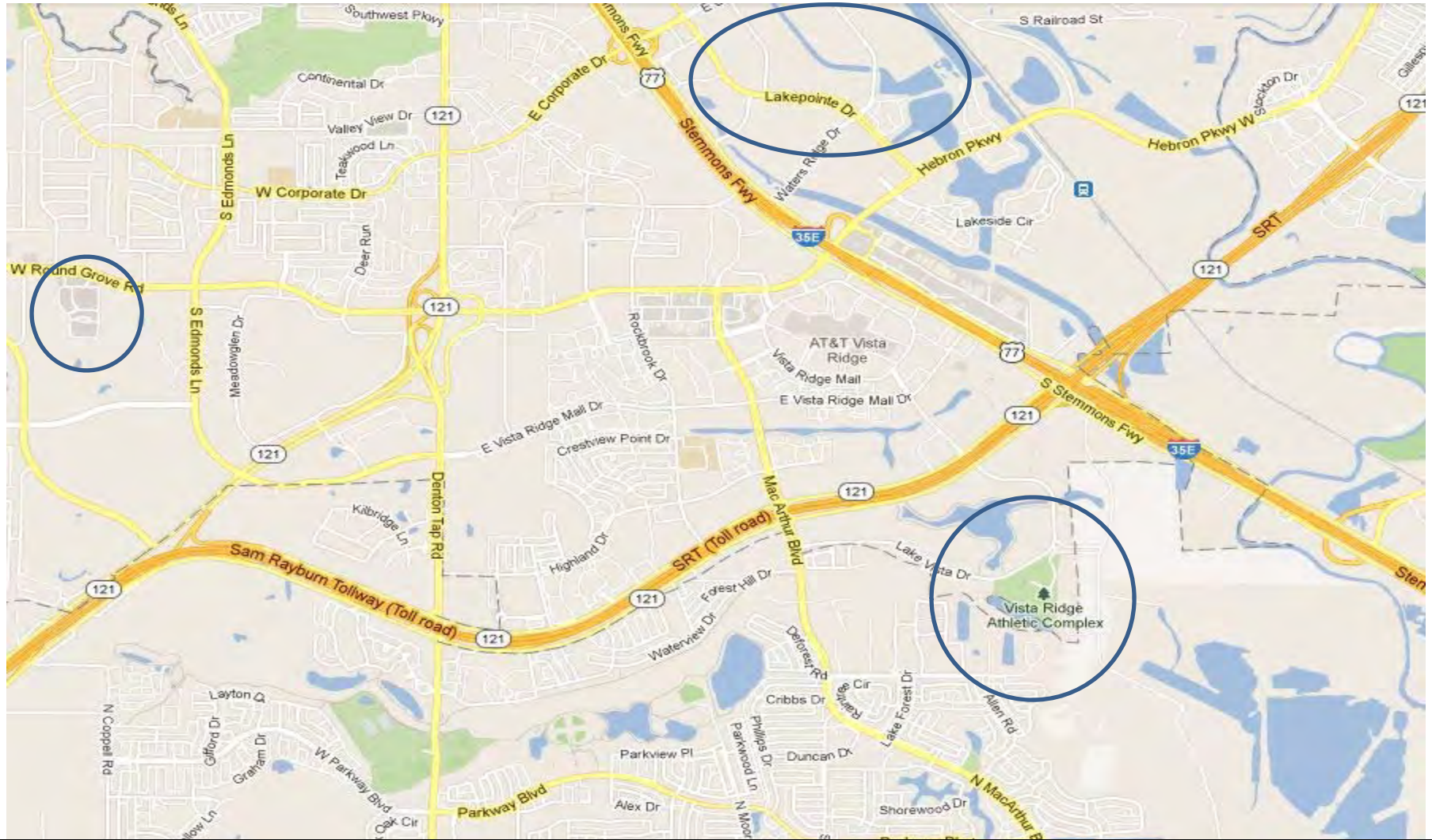
Route 21 Proposed New Routing



Current Routing

New Routing

Areas of Interest



A-train Schedule Adjustments

- Proposed schedule changes
 - Eliminate two trips in the afternoon
 - 5330: 2:48 pm from Old Town to Trinity Mills
 - 5929: 3:22 pm from Downtown Denton Transit Center
 - Add an additional pm trip between 6:40 and 8:06
 - Depart Trinity Mills at 7:26 pm
 - Would close the gap, per customer request, for this time period

The logo for DCTA (Denton County Transit Authority) features the letters "DCTA" in a bold, white, sans-serif font. The text is set against a dark green rectangular background. A yellow graphic element, resembling a stylized arrow or a speech bubble tail, points upwards from the bottom right corner of the green box.

Next Steps

- Additional Public Meetings & Involvement Opportunities
 - September 5: Downtown Denton Transit Center
 - September 5: UNT Student Center
 - September 6: Highland Village Council Chamber
 - September 13: Twitter Townhall Meeting
 - September 18: TWU Student Center
- Board Approval: October 24
- Implementation: January 14, 2013

The logo for DCTA (Denton County Transit Authority) features the letters "DCTA" in a bold, white, sans-serif font. The text is set against a dark green rectangular background. Below the green bar, there is a yellow graphic element that resembles a stylized swoosh or a shadow, extending from the right side of the logo.

Contact Information

- Sr Transit Planner: Cheri Soileau, AICP, PMP
 - 972-316-6105
 - csoileau@dcta.net
- www.DCTA.net
 - www.facebook.com/ridedcta

The logo for DCTA, featuring the letters "DCTA" in a bold, white, sans-serif font. The letters are set against a dark green rectangular background. A yellow, curved shape resembling a speech bubble tail or a stylized underline is positioned below the letters, extending from the right side of the green bar.