



## GET UP AND GO WITH GOZONE

Meet GoZone, DCTA's new on-demand rideshare service! Powered by Via, GoZone works like a minibus that comes when you want, where you want. Book rides straight from your phone and get picked up in a branded GoZone vehicle. Commute or get around Denton, Highland Village and Lewisville with limited wait times.

GoZone operates seven days a week and costs only \$0.75 per ride — and with any DCTA pass, it's free! Visit [dctagozone.net](https://dctagozone.net) to learn more.



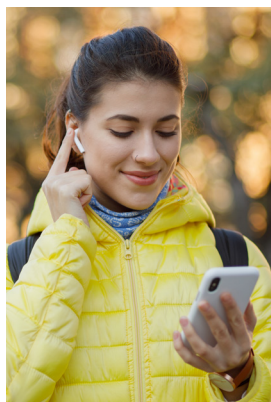
## DCTA CONNECT BUS SERVICE

UNT students, faculty and staff can ride the UNT Campus Shuttles and DCTA Denton and Lewisville Connect Bus service for free with a valid UNT ID.



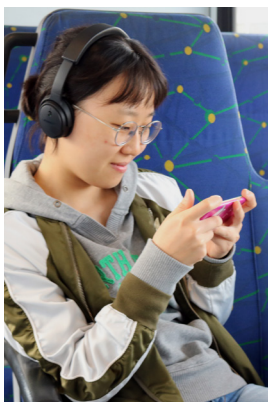
## UNIVERSITY PASS PROGRAM

The University Pass Program provides UNT students, faculty and staff semester-long passes at a discounted rate. DCTA's program provides an affordable and convenient commute alternative.



## LATE-NIGHT LYFT SERVICE

DCTA partners with Lyft to provide safe, reliable and complimentary after-hours service between 2 a.m. and 7 a.m. to students traveling within the specified UNT Lyft Zone. Students must receive a specific promo code for each semester from UNT to utilize the service.



## MEDPARK STATION PARK & RIDE

Looking for quick and free parking? Park for free at the DCTA MedPark station and take the Colorado Express bus all the way to campus! You can also ride DCTA's A-train free from the MedPark station to the Downtown Denton Transit Center as part of the agency's "Free Fare Zones" ongoing promotion.



## UNT CAMPUS SHUTTLES

The UNT Campus Shuttle is a DCTA service offered in partnership with UNT to provide direct shuttle service to campus and off-campus student housing.

All riders can use the UNT Campus shuttle. Valid DCTA Local AM and PM, Day pass and Regional fare options are accepted. UNT students, faculty and staff with a valid school ID can ride the UNT shuttle at no additional cost.



## NEW UNT CAMPUS SHUTTLE ROUTES

**DS 181:** New route serves the north side of the Forum apartments, NTX apartments and the south side of the Arch apartments.

**PE (A&B):** Parking Express Victory Hall and Parking Express Fouts Field routes will be combined into one route to add capacity, and the routes will hub out of the Highland Street parking garage.



Sign up for  
Rider Alerts



Download the  
Transit Tracker App