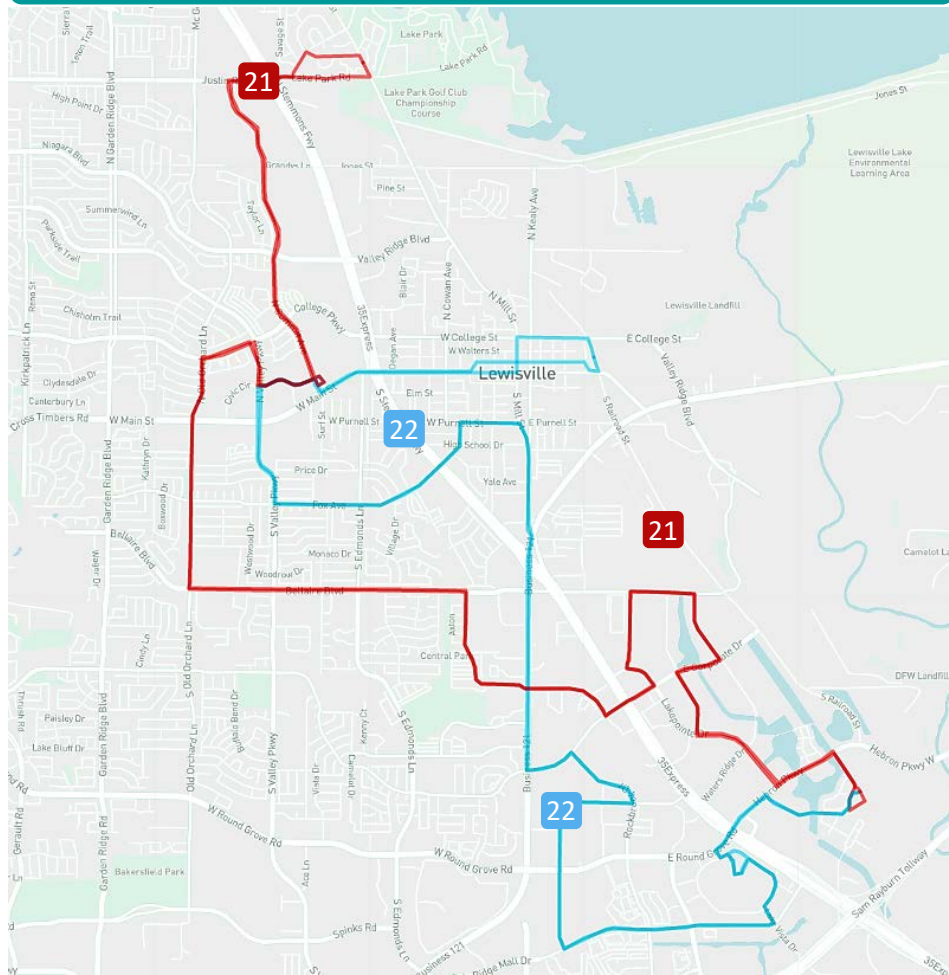


Proposed Lewisville Service Changes

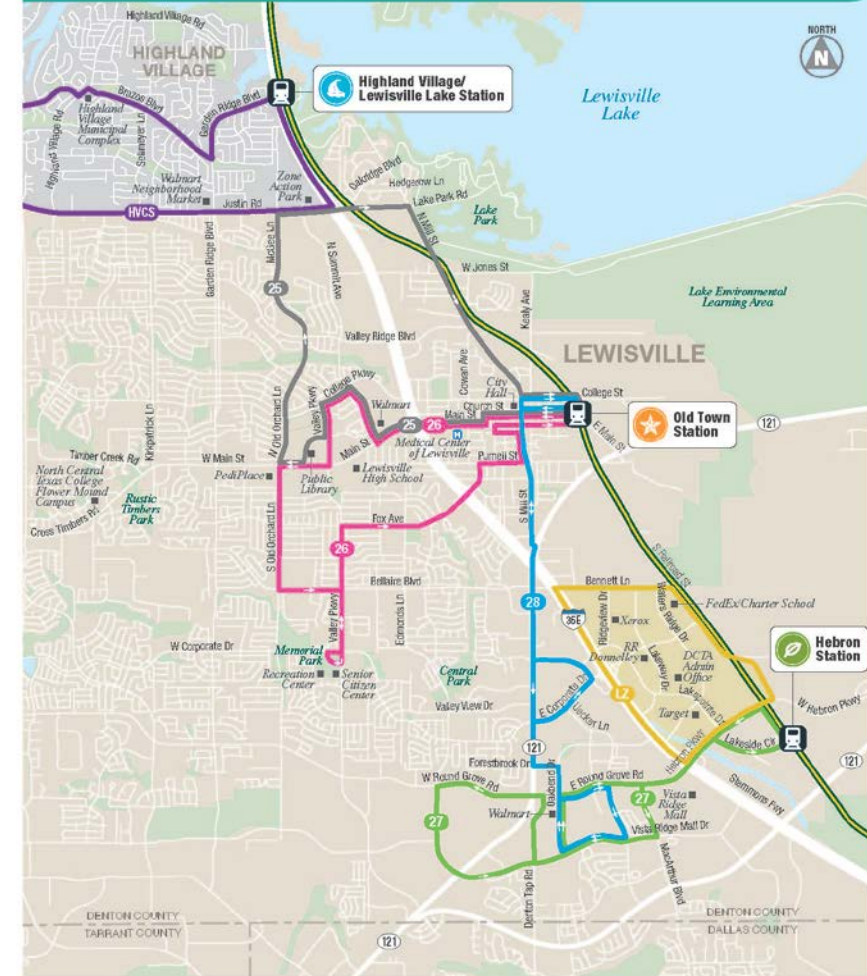


LEWISVILLE CONNECT

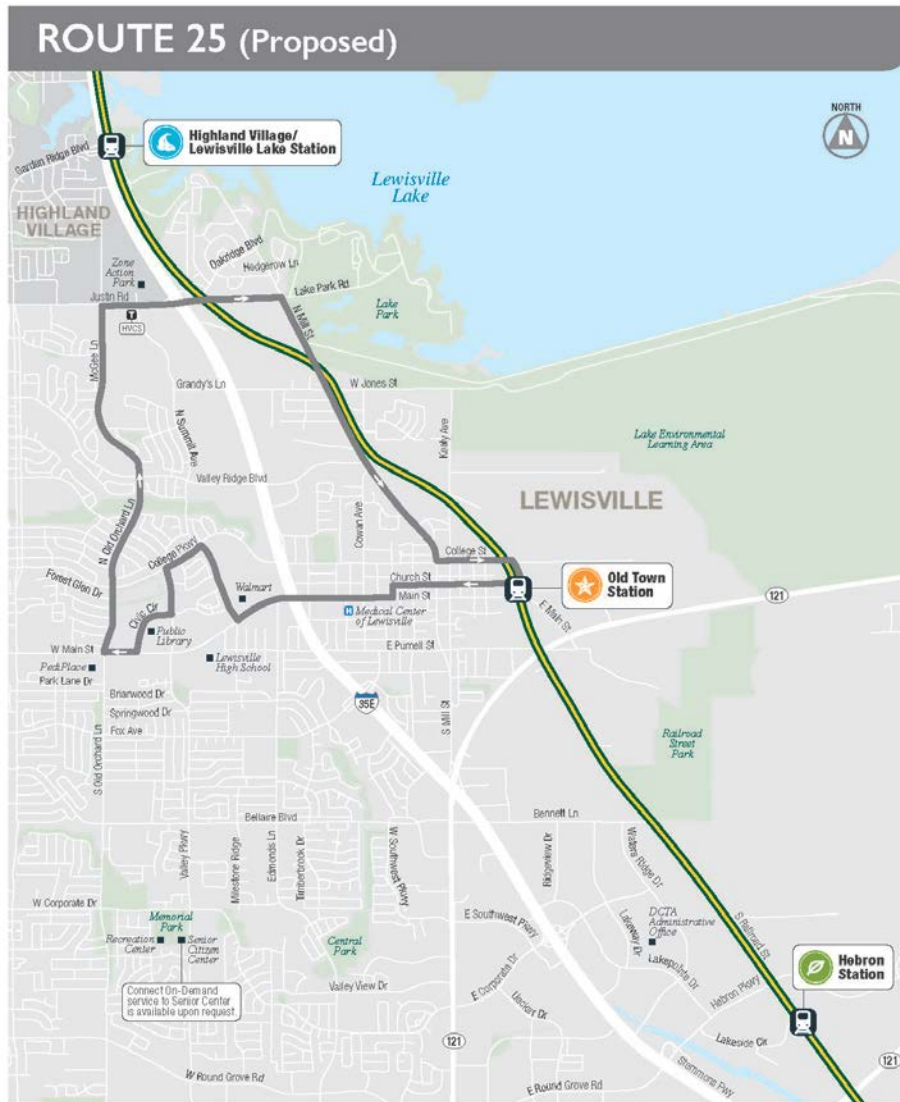
Current Lewisville System



LEWISVILLE (Proposed)



LEWISVILLE CONNECT: Route 25



30 Minute Frequency

Connections

- Connects with Route 26 at Old Town Station, Church Street, Main Street and Summit Avenue
- Connects with Route 28 at the Old Town Station
- Connects with HVCS at FM 407 and Summit Avenue

Serves:

- Old Town Station
- Lewisville City Hall
- Main Street Wal-Mart
- Department of Public Safety
- Department Family & Protective Services
- Post Office
- Lewisville Public Library
- Lewisville Municipal Annex
- Residential and Light Industrial on Mill north of Main Street

LEWISVILLE CONNECT: Route 26

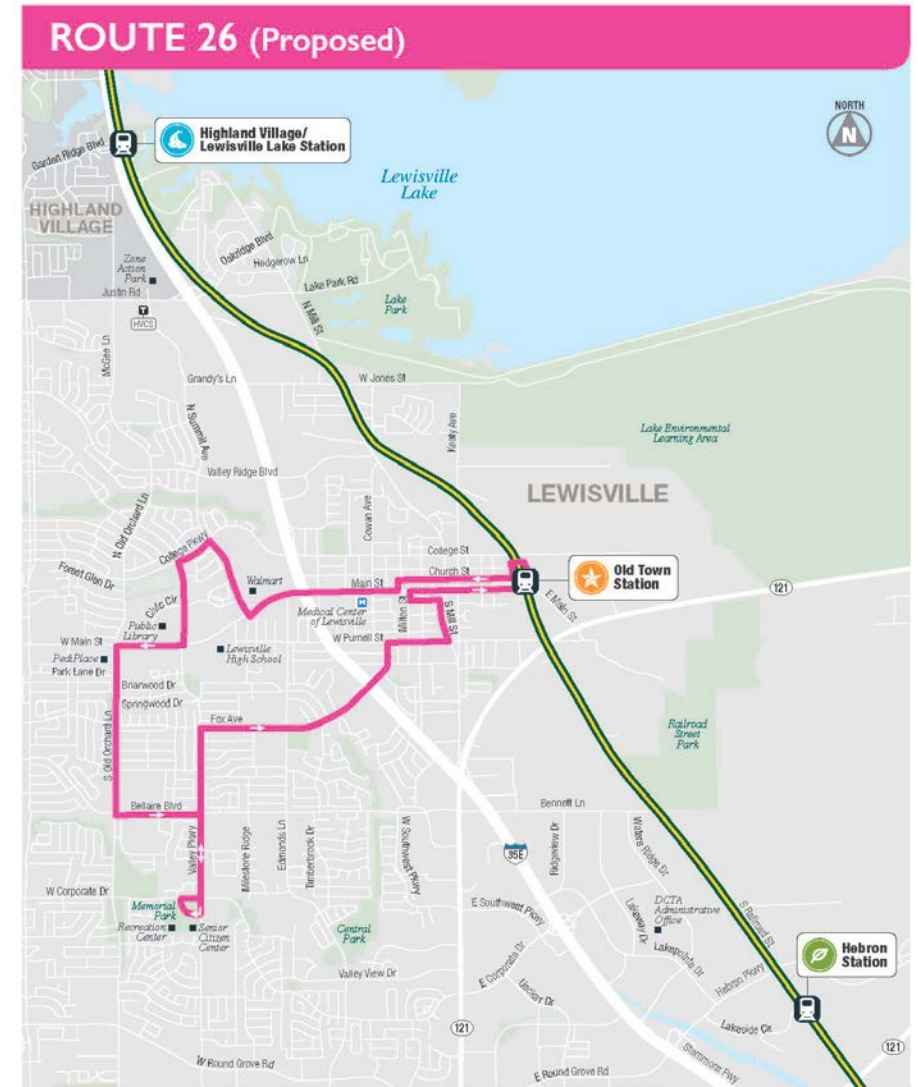
30 Minute Frequency

Connections:

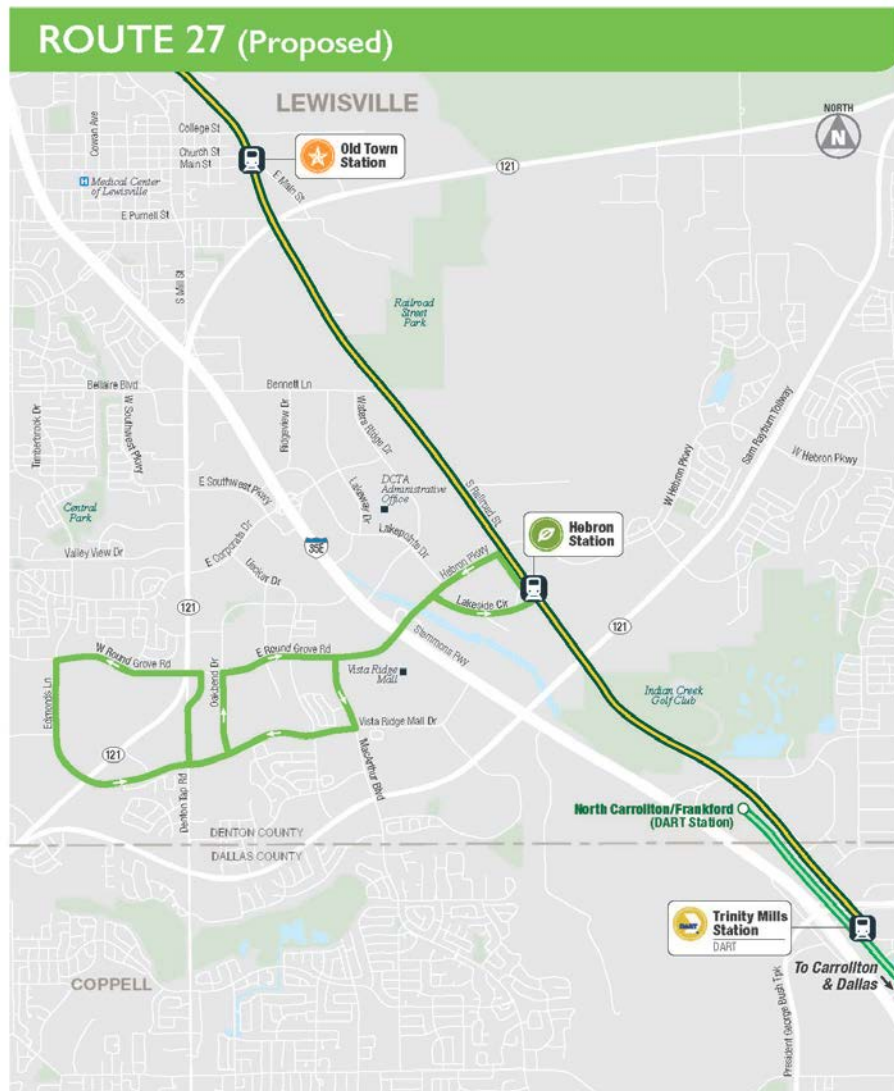
- Connects with Route 25 at the Old Town Station, along Church Street, Main Street and Summit Avenue
- Connects with Route 28 at the Old Town Station

Serves:

- Old Town Station
- Lewisville City Hall
- Main Street Wal-Mart
- Lewisville Public Library
- Senior Center
- Memorial Park Recreation Center
- Educational Facilities
- Residential Area Along Fox Avenue
- Improved access for CCA and Salvation Army



LEWISVILLE CONNECT: Route 27



30 Minute Frequency

Connections:

- Connects with Route 28 along Oak Bend Drive, Vista Ridge Mall Drive and portions of Round Grove Road
- Connects with the Lakeway Zone at the Hebron Station

Serves:

- Hebron Station
- Round Grove Road Retail
- Large areas of Multi-Family Housing
- Serves Mary Kay from the front of the building (outbound) and the side (inbound)
- Office Park off Edmonds at 121
- Convergence Office Park
- Round Grove Wal-Mart

LEWISVILLE CONNECT: Route 28

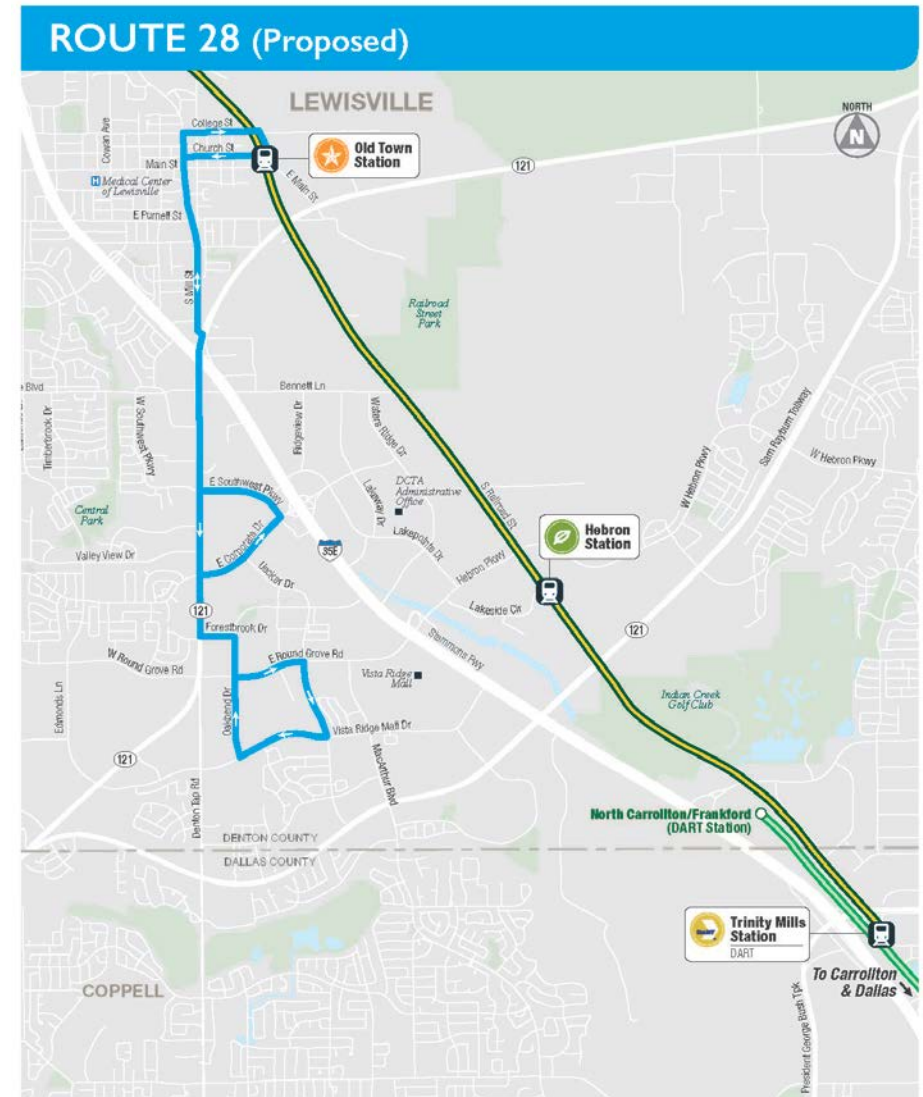
30 Minute Frequency

Connections:

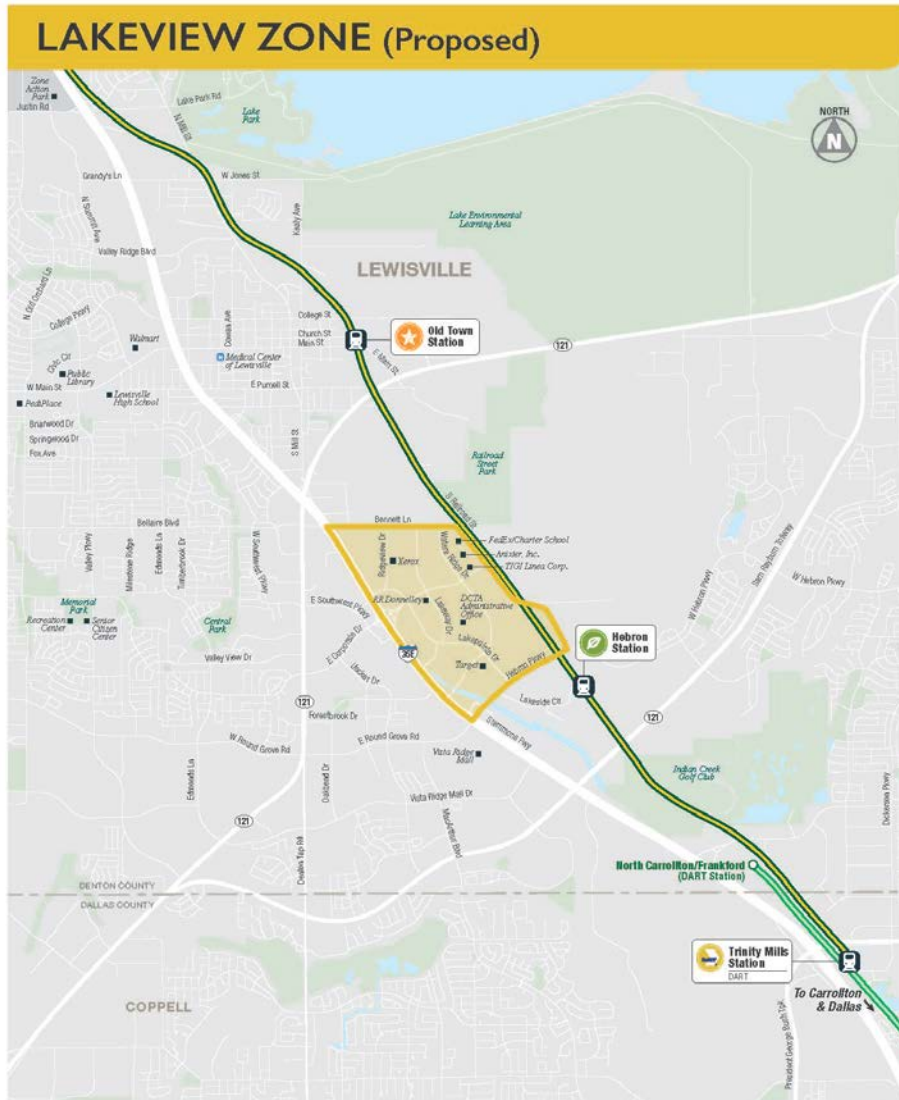
- Provides a North-South Connection
- Connects with Route 25 and Route 26 at the Old Town Station
- Connects with Route 27 along Oak Bend Drive, Vista Ridge Mall Drive and portions of Round Grove Road

Serves:

- Old Town Station
- CCA (Both Mill Street and 121 locations)
- Budget Suites
- Apartments along Southwest Parkway
- Round Grove Wal-Mart
- Mary Kay on the side of the building



LEWISVILLE: Lakeview Zone



Possible Lyft Zone

Potential Hub System or Curb-to-Curb:

- Hub out of Hebron Station
- With possible hub or curb-to-curb inside the zone at:
 1. Xerox
 2. Lakeway @ Bennett
 3. Fed Ex / Charter School
 4. Anixter, Inc. / TIGI Linea Corp.
 5. RR Donnelley
 6. DCTA Admin Office
 7. Target
 8. Other Potential Locations as Identified